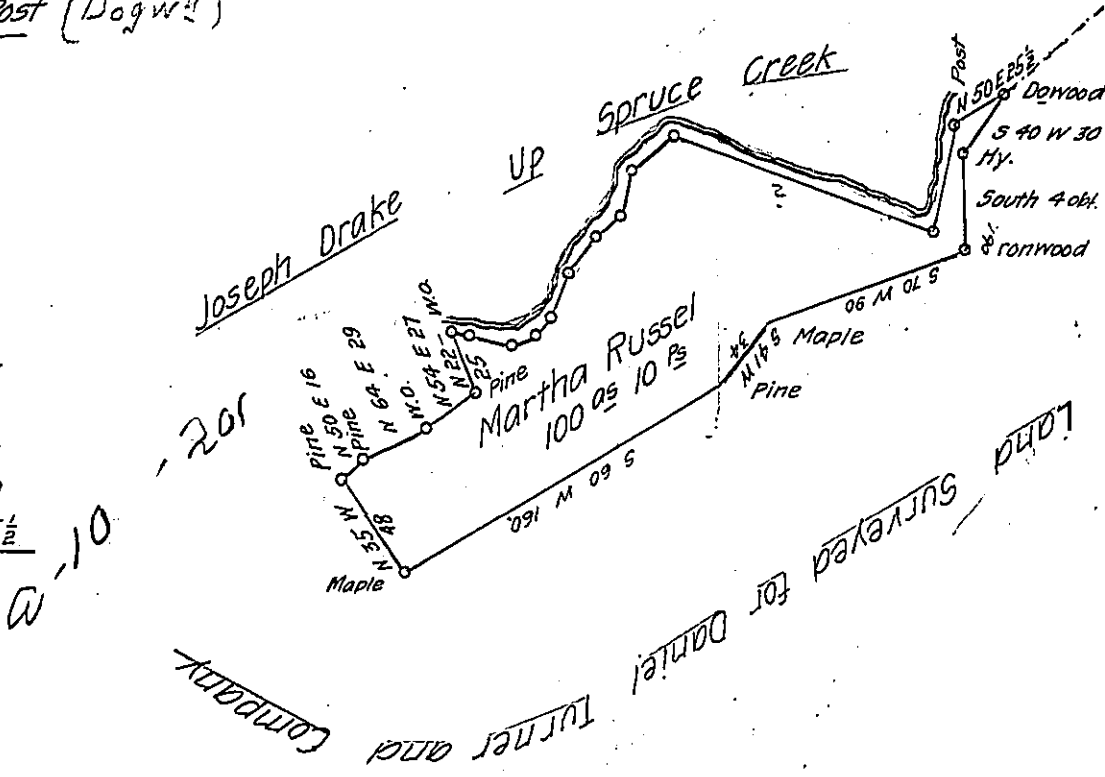


Courses & distances

Up Spruce Creek from  
the W.O. to the Post (Dogwood)

- N 80 E 7
- S 75 E 20
- N 62 E 12
- N 45 E 10
- N 19 E 18
- N 37 E 19
- N 55 E 14
- N 13 E 20
- N 55 E 25
- S 29 E 101
- S 80 E 20
- N 15 E 40
- N 50 E 25½



Situate on Spruce Creek about two miles from the mouth in Franklin Township in the County of Huntingdon containing one hundred acres ten perches and the usual Allowance for Roads Surveyed the 8<sup>th</sup> day of October 1794 In pursuance of a Warrant for 80 Acres dated the 8<sup>th</sup> day of August 1794

John Canan D.S.

Daniel Brodhead Esquire

S. G.

IN TESTIMONY that the above is a copy of the original remaining on file in the Department of Internal Affairs of Pennsylvania, made conformably to an Act of Assembly approved the 16th day of February, 1833, I have hereunto set my Hand and caused the Seal of said Department to be affixed at Harrisburg, this twenty first day of September 1906

*Spencer D. ...*  
Secretary of Internal Affairs.